



SeceuroVision 38 (Punched)
White Finish

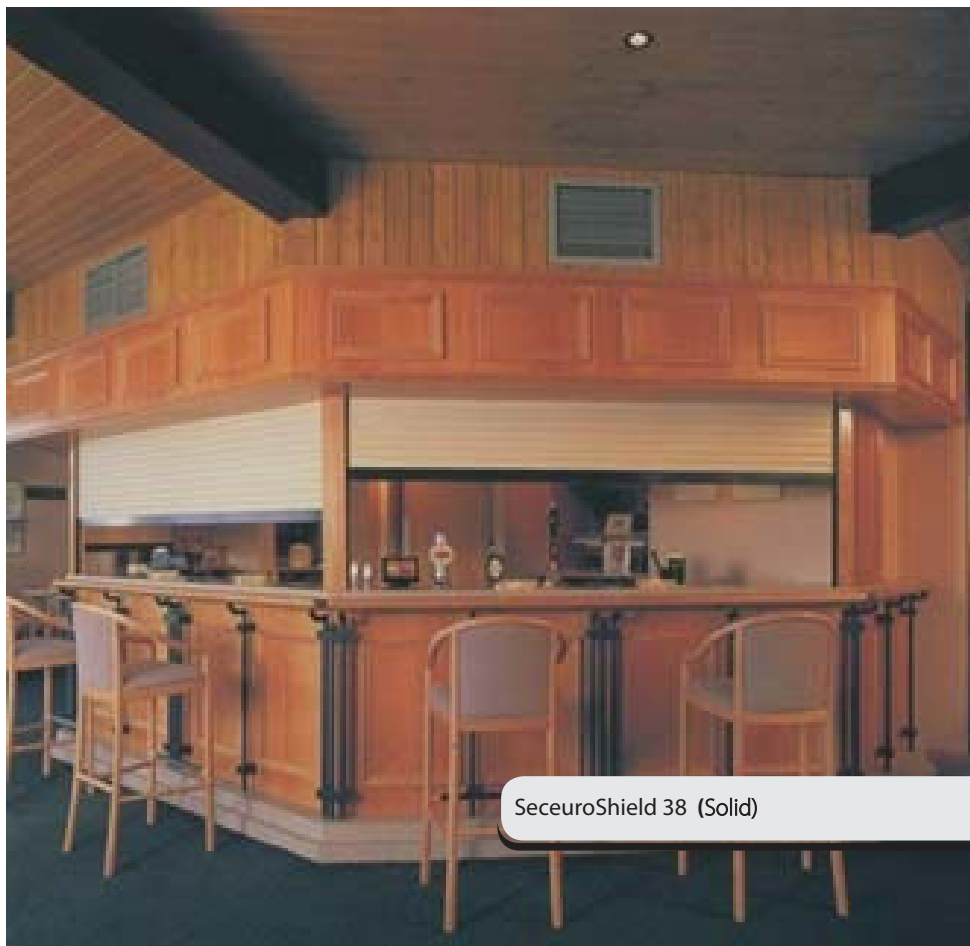
Protecting what's
important to you



SeceuroShield
Physical Security

ARROW
SECURITY SHUTTERS

Tel. 0800 633 5736



Welcome to the SeceuroShield range of physical security products

SeceuroShield physical security products have been protecting properties since 1985.

Although often overlooked, securing your property provides peace of mind by protecting the things that matter most to you, whether that's your home and family or your business and consequently your livelihood. With so much choice, choosing a security product that most suits your needs can seem like a daunting task but SeceuroShield industry leading products address all requirements and are manufactured, supplied and installed by industry experts who are there to offer advice and guidance beginning with your initial enquiry through to installation and after care.

Besides securing your property, many SeceuroShield products offer other benefits such as insulation and sound proofing, ventilation, or increased advertising space for your business by use of special graphics.

The emphasis behind our range of shutter and gate designs is on integration into your building and way of life; unobtrusive, attractive and easy to use. Proudly manufactured in the UK and installed to complement the look of the building, SeceuroShield products ensure they are effective and secure in daily use.

All products are supplied and installed through your local approved distributor who will be able to offer expert guidance and advice to ensure a tailor made solution.

All SeceuroShield products are:

- ✓ Made to measure for a tailor made security solution
- ✓ Manufactured in the UK
- ✓ CE Marked – Investing in a CE marked product means you are purchasing a product that is fully compliant with all European directives
- ✓ Designed to integrate security seamlessly into a building
- ✓ Approved LPCB and Secured By Design products available

Versatile security

Security facts – did you know...

"The goal of physical security is to convince potential attackers that the likely cost of attack exceeds the value of making the attack in the first place."

Wikipedia

*"Crime costs businesses **£19 billion** annually."*

British Chamber of Commerce

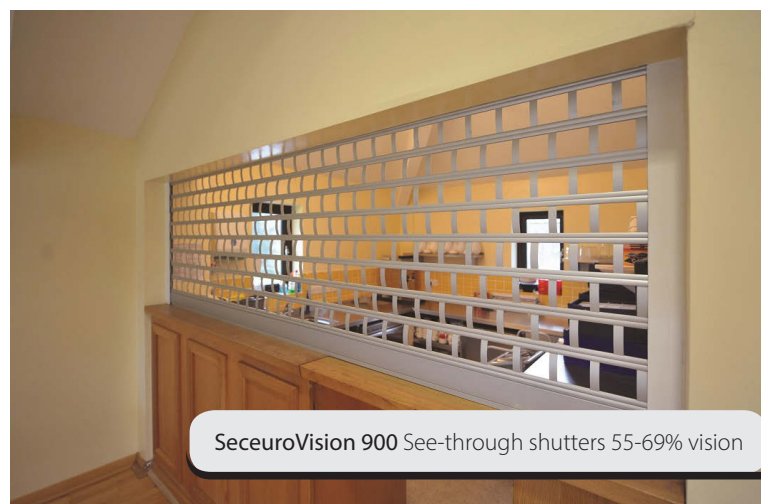
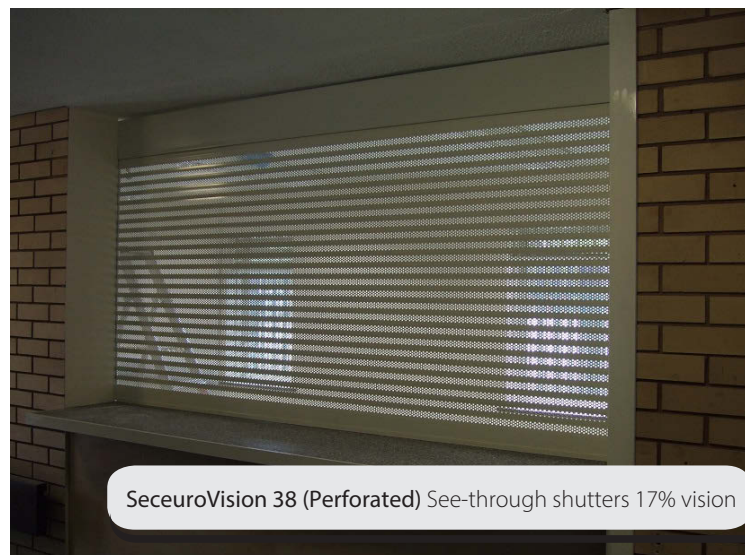
*"Every **37 seconds** a house in Britain is burgled."*

*"Retail crime cost **£14 billion** in 2011."*

*"Prevention is always better than cure. **Always Deter, Delay, Detect, Deny.**"*

Need some guidance?

See our Product Matrix on **Page 9 & 10** for more information.



Hospitality

Convenient protection for you and your staff.

What I need:

- To have a bar area as an operational room outside of licensed hours
- To have the option to cover a serving area
- To keep unauthorised personnel away from an area
- A choice between solid or see-through shutters

SeceuroShield has a solution

Hotels, restaurants, canteens and kiosks all have areas which need to be quickly and efficiently fenced off and bar and serving hatches which need to be securely locked up outside of opening hours. Keep your products visible as well as secure with our choice of vision shutters and retractable gates, or choose a product with insulation

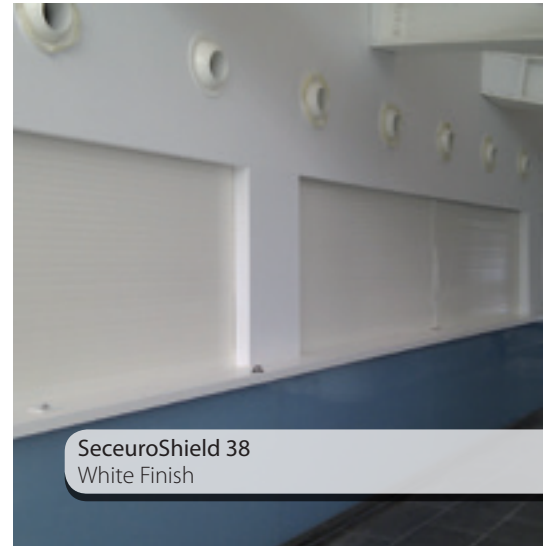
benefits to increase your business's energy efficiency. With an extensive choice of colours you can choose a product which blends into the corporate look of your business.

Hospitality Choice

- ✓ LPCB approved and SBD products available
- ✓ Full integration into the premises with a choice of colour and vision
- ✓ Insulated slats offering sound reduction
- ✓ Electric or manual operation
- ✓ Remote control option to remove the need for switches easily pressed by unauthorised personnel



SeceuroVision 38 (Punched)
White Finish



SeceuroShield 38
White Finish

Other applications

Versatile security with SeceuroShield.

As well as traditional applications, the SeceuroShield range of products has proven to be extremely effective across many other projects. From animal enclosures to sheds, portable buildings, outhouses and cupboards, SeceuroShield security offers a versatile solution for almost any vulnerable opening or as an effective method of access control.

Choice

- ✓ LPCB approved and SBD products available
- ✓ Manual or electric operation
- ✓ Local expert advice for the right product
- ✓ Full choice of colours and finishes



SeceuroShield 38
White Finish

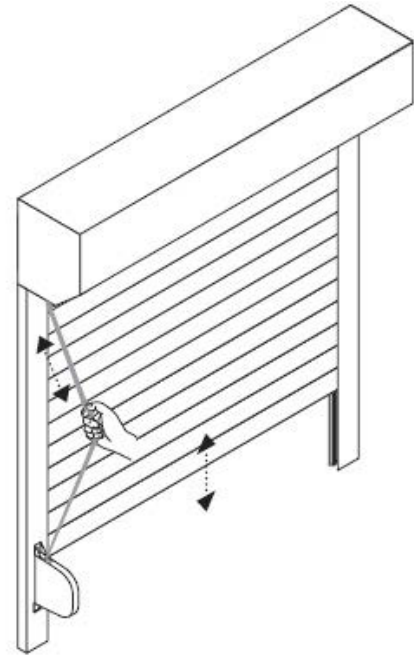


SeceuroVision 900
Blue Finish

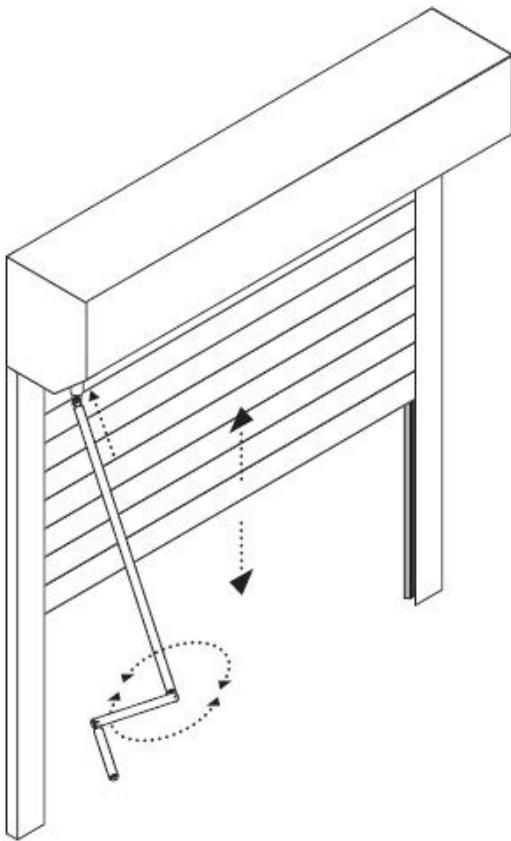
BELT OPERATED

1. **Roller Shutter Assembly:** The roller shutter typically consists of horizontal slats made of Aluminium durable material. These slats are connected to each other and are wound around a roller at the top of the opening.
2. **Belt Mechanism:** Instead of using a traditional crank or motorized mechanism, a belt-operated roller shutter uses a belt to raise and lower the shutter. This belt is made from strong nylon cord.
3. **Pulley System:** Inside the roller shutter assembly, there is a pulley system that guides the movement of the belt. The belt is threaded through these pulleys in such a way that pulling on one end of the belt causes the roller to rotate, raising or lowering the shutter.
4. **Operation:** To operate the belt-operated roller shutter, you typically have a strap attached to one end of the shutter. By pulling down on the strap, you apply tension to the belt, which in turn rotates the roller. As the roller turns, it winds up the shutter, raising it to open the window or door. To close the shutter, you simply reverse the process by pulling the strap in the opposite direction, causing the roller to unwind and lower the shutter.
5. **Locking Mechanism:** Many belt-operated roller shutters come with a locking mechanism to secure the shutter in place when it's fully closed. This provides added security and helps prevent unauthorized access.

Overall, a belt-operated roller shutter provides a simple and effective way to control light, privacy, and security in a building, using a belt mechanism to smoothly raise and lower the shutter as needed.



CRANK OPERATED

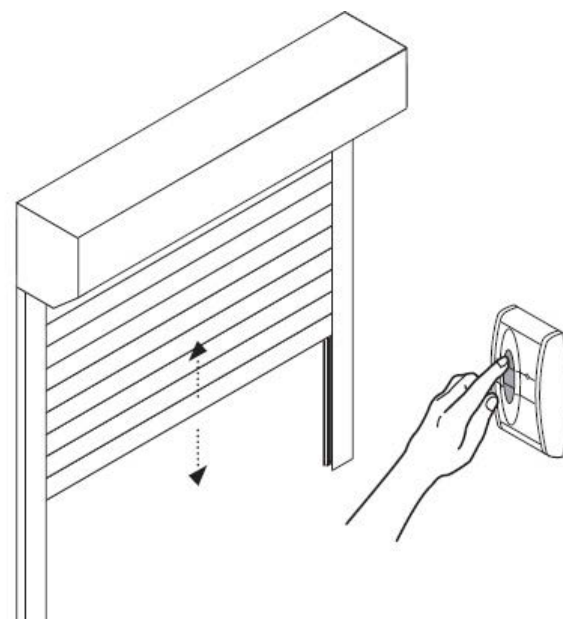


1. **Roller Shutter Assembly:** Like the belt-operated version, the roller shutter assembly consists of horizontal slats connected to each other, wound around a roller at the top of the opening.
2. **Crank Handle Mechanism:** Instead of a belt, this type of roller shutter utilizes a crank handle mechanism for operation. The crank handle is typically attached to a shaft, which is connected to gears inside the roller shutter assembly.
3. **Gear System:** Inside the roller shutter assembly, there is a set of gears that connect the crank handle to the roller. When you turn the crank handle, it rotates the shaft, which in turn rotates the gears. These gears translate the rotational motion of the crank handle into linear motion, causing the roller to either wind up or unwind the shutter.
4. **Operation:** To open the roller shutter, you simply turn the crank handle in one direction. As you turn the handle, the gears inside the assembly engage and rotate, causing the roller to wind up the shutter, raising it to open the window or door. To close the shutter, you turn the crank handle in the opposite direction, causing the roller to unwind and lower the shutter.
5. **Locking Mechanism:** Similar to the belt-operated version, crank handle-operated roller shutters often come with a locking mechanism to secure the shutter in place when it's fully closed, providing added security and peace of mind.

In summary, a crank handle-operated roller shutter provides a manual way to control the opening and closing of windows or doors, using a crank handle mechanism to smoothly raise and lower the shutter as needed.

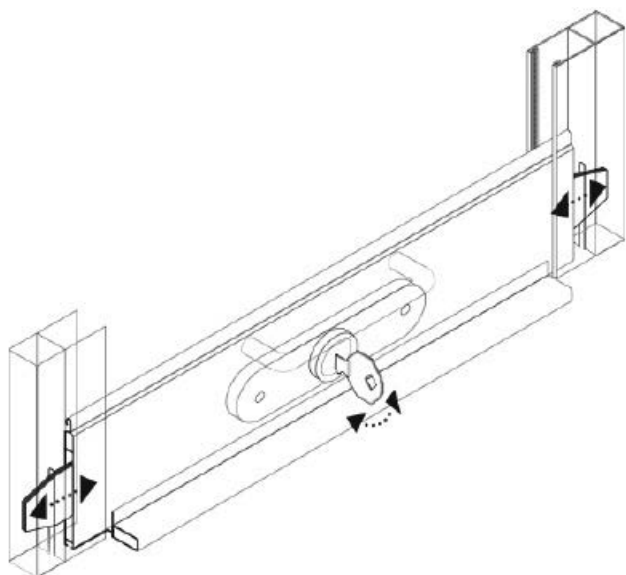
ELECTRIC OPERATED

1. **Roller Shutter Assembly:** Like the manual versions, the roller shutter assembly consists of horizontal slats connected to each other, wound around a roller at the top of the opening.
2. **Electric Motor:** Instead of manual operation, an electrically operated roller shutter is equipped with an electric motor. This motor is typically installed within the roller shutter assembly or mounted nearby, connected to the roller via a gear mechanism or direct drive system.
3. **Control System:** Electric roller shutters come with a control system that allows you to operate them conveniently. This control system can include wall-mounted switches, remote controls, or even smartphone apps depending on the sophistication of the system.
4. **Operation:** To open or close the roller shutter, you simply activate the electric motor using the control system. When you press the appropriate button or command, the electric motor engages and rotates, causing the roller to either wind up or unwind the shutter. The motor's movement is translated into linear motion, lifting or lowering the shutter smoothly.
5. **Safety Features:** Electric roller shutters often come with safety features such as press and realise button. These buttons can be realised if there is anything obstructing the path of the shutter while it's closing, prompting it to stop and reverse to prevent damage or injury.
6. **Power Source:** Electric roller shutters require a power source to operate. They are typically wired into the building's electrical system, although some models may be battery-powered or equipped with backup power sources in case of outages.



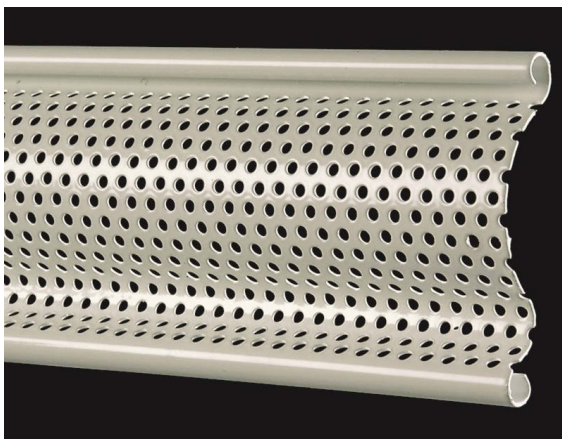
In summary, an electrically operated roller shutter provides a convenient and automated way to control the opening and closing of windows or doors, using an electric motor and control system to raise and lower the shutter with ease.

SPRING & LOCK OPERATED

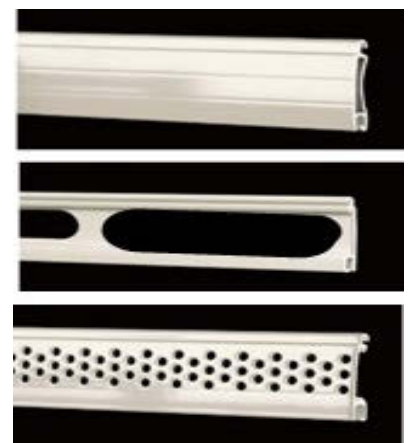


1. **Spring Mechanism:** The key component of a spring and lock-operated roller shutter is the spring mechanism. This usually consists of a torsion spring or a series of tension springs installed within the roller shutter assembly. The springs are wound tightly when the shutter is closed.
2. **Locking Mechanism:** Unlike other types, the spring and lock-operated roller shutter doesn't rely on external handles or motors for operation. Instead, it's typically operated manually by releasing a locking mechanism. This can be a simple latch or lock located near the bottom of the shutter.
3. **Operation:** To open the roller shutter, you manually release the locking mechanism. Once the lock is disengaged, the stored energy in the tightly wound springs causes the roller to unwind, allowing the shutter to raise itself automatically. The force generated by the springs lifts the shutter smoothly and efficiently.
4. **Closing and Locking:** To close the shutter, you manually pull it down until it reaches the desired position. Once in place, you engage the locking mechanism to secure the shutter in the closed position. This can be a simple process of latching the lock back into place.
5. **No Power Requirement:** One of the advantages of a spring and lock-operated roller shutter is that it doesn't require any external power source, making it ideal for situations where electricity may not be available or reliable.

In summary, a spring and lock-operated roller shutter offers a manual and straightforward way to control the opening and closing of windows or doors, utilizing a spring mechanism to assist in lifting the shutter and a simple locking mechanism to secure it in place when closed.



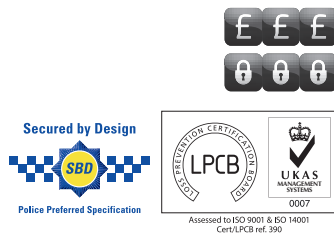
SeceuroShield 7501 (Vision Slat) Perforated



SeceuroShield 38 BrowSlats Solid, Punched, Perforated

SeceuroShield | 7501 Insurance Approved Security Shutters

A variant on the traditional shutter, available as both solid or vision.



- Tested and approved to Loss Prevention Standard 1175-1
- Available as solid or perforated
- Strong single skin galvanised steel profile
- Delivers up to 25% vision (when back lit)
- Medium security office / commercial / industrial applications
- Spans widths up to 6000 mm
- Can be powder coated any RAL / BS colour
- Flexibility to mix solid and vision slats together when only partial vision is required
- Will reverse coil if required (will increase coil size)
- Manufactured with aluminium head box and guides for higher grade applications and easier installation, also available with traditional galvanised steel channels and head box

Choose me if:

- ✓ You need security tested and approved to LPS 1175-1
- ✓ You require vision without compromising on security
- ✓ You need a shutter which can be powder coated to blend in with your business's exterior
- ✓ The overall width is not greater than 6000 mm

SeceuroShield | 38 Built-On Security Shutters

Our best selling security shutter.



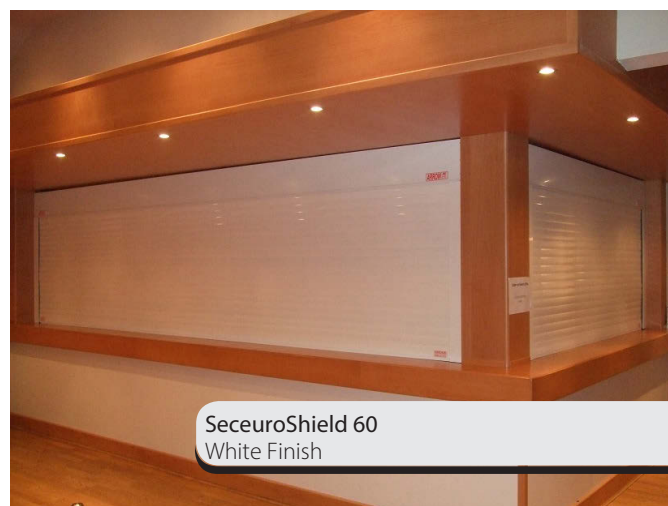
- Strong extruded aluminium curtain profile
- Medium security applications
- Spans widths up to 4000 mm
- Can be powder coated in special colours if required
- Can be mixed with SeceuroVision 38 where partial vision is required
- Can be fitted both internally and externally
- Available as built-on or built-in
- Available with radio motors offering smart group and individual control
- Available with custom graphics and logos

Choose me if:

- ✓ You want to blend your security solution into your surroundings
- ✓ You have a medium security application
- ✓ You want to choose between manual and electric operation
- ✓ You are a new build wanting the most integrated seamless system available
- ✓ You want wireless control

Looking for security for a new building?

Ask for our Built-In Shutter guide to let you work security into your design.



SeceuroShield | 75 Built-On Security Shutters

Galvanised Steel Shutter.



This is our continental commercial shutter, for larger sizes please see our traditional shutter in our SeceuroDoor brochure.

- Available in electric or automatic operation
- Classic steel roller shutter with scrolled slat
- Can be powder coated any RAL/BS colour
- Manufactured with white or brown aluminium head box and guides for higher grade applications and easier installation

Choose me if:

- ✓ The overall width is not greater than 6000 mm
- ✓ You need to blend the colour into your surroundings
- ✓ You prefer the traditional steel shutter over aluminium
- ✓ You have an external application

SeceuroShield | 60 Built-On Security Shutters

A high security profile able to cover up to 20 sqm.

















- Very strong extruded aluminium profile
- Higher security applications on commercial / retail premises
- Spans widths up to 6000 mm and can be powder coated special colours
- Can be fitted both internally and externally
- Available with custom graphics and logos
- Coverage of up to 20 sqm

Choose me if:

- ✓ You need protection in a larger space
- ✓ You need externally fitted shutters
- ✓ Your security needs to blend in with the building and surroundings
- ✓ You prefer a larger slat profile

Product Matrix

 SeceuroShield Physical Security	Page	Investment & Security	Domestic	Retail	Commercial	Bar / Servery / Kiosk / Cabinet	Maximum & Minimum Widths	1
SeceuroShield 3801 Insurance Approved Security Shutters	11		•	•	•	•	Min: 900 mm Max: 3000 x 4000 mm	
SeceuroShield 7501 Insurance Approved Security Shutters	11			•	•		Min: 1000 mm Max: 6000 x 3400 mm	
SeceuroShield 38 Built-On Security Shutters Solid Slats	10		•	•	•	•	Min: 500 mm Max: 4000 x 5000 mm	
SeceuroShield 75 Built-On Security Shutters Solid Slats	12			•	•	•	Min: 1000 mm Max: 6000 x 3400 mm	2
SeceuroShield 60 Built-On Security Shutters Solid Slats	12			•	•	•	Min: 900 mm Max: 6000 x 5000 mm	
SeceuroShield 150 Built-On Security Shutters Solid Slats	13		•			•	Min: 500 mm Max: 3400 x 4000 mm	
SeceuroShield 77 Built-On Security Shutters Solid Slats	13		•	•	•	•	Min: 900 mm Max: 5400 x 4000 mm	
SeceuroVision 900 See-Through Shutters 55-69% Vision	14			•	•	•	Min: 900 mm Max: 5000 x 4000 mm	
SeceuroVision 800 See-Through Shutters Punched & Glazed 62% Vision	14			•	•	•	Min: 900 mm Max: 6000 x 5000 mm	
SeceuroVision 75 See-Through Shutters Perforated 25% Vision	15			•	•	•	Min: 1000 mm Max: 6000 x 3400 mm	2
SeceuroVision 38 See-Through Shutters Punched & Glazed 45% Vision	15		•	•	•	•	Min: 500 mm Max: 3000 x 5000 mm	
SeceuroVision 38 See-Through Shutters Perforated 17% Vision	15		•	•	•	•	Min: 500 mm Max: 3000 x 5000 mm	
SeceuroGuard 1000 Retractable Security Gates	16		•	•	•	•	Min: 500 x 500 mm Max: 6000 x 3500 mm	
SeceuroGuard 1001 Insurance Approved Retractable Security Gates	17		•	•	•	•	Min: 500 x 1000 mm Max: 6000 x 3000 mm	
SeceuroBar Removable Window Bars	18		•	•	•	•	Min: 250 x 200 mm Max: 3000 x 2100 mm	

1 Sizes quoted may not be available with some operation modes and may alter depending on product application, wind loading or whether installed as a secondary or sole closure. Limitations apply to maximum overall sizes.

2 Please note the maximum sizes quoted for SeceuroShield 75 and SeceuroVision 75 are applicable to the continental style shutter with aluminium head box and guide rails. These products are also available with traditional galvanised steel channels and head box. The maximum sizes for the traditional style are: maximum width 6400 mm, maximum height 4700 mm and maximum area 20 sqm.

Insulated	Secured By Design	LPCB Insurance Approved	Electric (E) or Manual (M)	Standard Finishes	Any RAL/BS Colour as an Extra
	✓	✓	E	3	✓
	✓	✓	E & M	1	✓
			E & M	3	✓
			E & M	1	✓
			E & M	3	✓
✓			E & M	4	
✓			E & M	12	
			E & M	1	✓
			E & M	3	✓
			E & M	1	✓
			E & M	3	✓
			E & M	4	✓
			M	27	✓
	✓	✓	M	27	✓
			M	1	✓

Secured by Design



Secured by Design is the official UK Police flagship initiative supporting the principles of 'designing out crime' by use of effective crime prevention and security standards for a wide range of products and applications.

Only products which have been tested and meet the required technical standard can be awarded the Police Preferred Specification.

Insurance approved security



The rigorous LPS 1175 burglary resistance standard is operated by the Loss Prevention Certification Board (LPCB). LPCB are the UK's leading independent certification body and the LPS 1175 standard is recognised and endorsed by 16 organisations including the Association of British Insurers and the Association of Chief Police Officers.

For more information on the scheme refer to:

www.brecertification.co.uk

CE marking

Learn more about the importance of conformity and CE marking on **Page 15**.



SeceuroVision 900



SeceuroVision 900



SeceuroVision 800

SeceuroVision | 900 See-Through Shutters

The new generation of roller grille – very tight coiling and alternative link patterns and spacing, gives outstanding light transmission.



- Internal use
- Extruded aluminium roller grille
- Delivers up to 69% vision
- Very compact coil diameter
- Medium security for retail / office / commercial applications
- Spans up to 5000 mm (subject to appropriate application)
- Can be powder coated special colours if required
- 150 mm or optional 75 mm vertical link spacing
- Solid slats can be added to further enhance security

Choose me if:

- ✓ You require a shutter that offers maximum vision whilst in use
- ✓ You require shutters for internal use only
- ✓ You want an attractive alternative to traditional shutters
- ✓ The overall width is not greater than 5000 mm

SeceuroVision | 800 See-Through Shutters

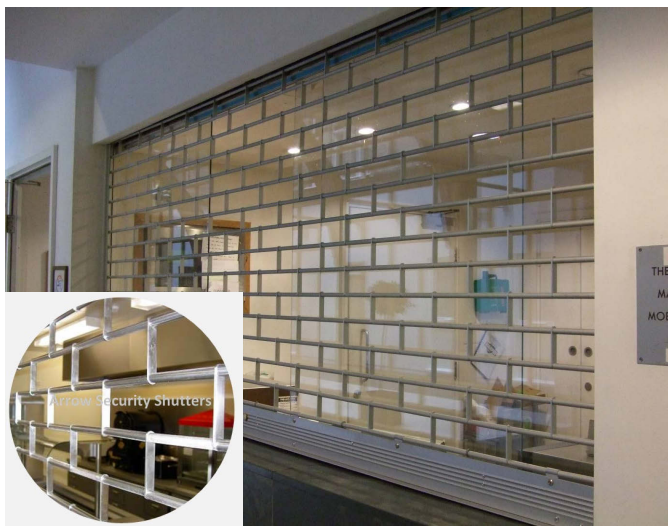
Retail security delivered with style. Spring assisted manual operation or effortless electric operation completes an ideal retail solution.



- Strong extruded aluminium profile
- Delivers up to 62% vision
- Offering security with an excellent level of vision
- Medium security retail / office / commercial applications
- Spans widths up to 6000 mm
- Can be powder coated special colours if required
- Can be mixed with solid profiles where higher security or only partial vision is required

Choose me if:

- ✓ You require a shutter that offers maximum vision and protection from wind and rain
- ✓ You want a shutter that can be mixed with solid slats to offer just partial vision
- ✓ The overall width is not greater than 6000 mm



Open Link Vision

Aluminium Tube & Link

1. **Material:** Constructed primarily from aluminum alloy components, known for its lightweight yet durable properties. The links and bars are typically made from high-grade aluminum for strength and corrosion resistance.
2. **Profile:** Consists of horizontal aluminum tubes linked together with connecting bars, forming a sturdy curtain-like structure.
3. **Tube Diameter:** Available in various diameters, typically ranging from 40mm to 100mm, depending on the size and strength requirements of the shutter.
4. **Link Bar Construction:** The link bars are rigid horizontal connectors that join adjacent aluminum tubes, ensuring smooth operation and structural integrity.
5. **Finish Options:** Can be supplied in a range of finishes, including powder-coated, anodized, or laminated finishes, providing both aesthetic appeal and protection against corrosion.
6. **Dimensions:** Available in standard sizes or custom-made to fit specific openings. Standard widths typically range from 500mm to 5000mm, and heights from 500mm to 4000mm.
7. **Operation:** Operated manually pull up / pull down spring & lock system, or motorized with options for remote control, key switch operation, or integration with building management systems.
8. **Security Features:** Designed to provide robust security against intruders, vandalism, and burglary attempts. The interlocking aluminum links and bars create a strong barrier, while locking mechanisms such as shoot bolts or ground locks enhance security further.
9. **Weather Resistance:** Aluminum construction offers excellent resistance to corrosion, rust, and weathering, making it suitable for outdoor applications in various climates.
10. **Safety Features:** Equipped with safety features such as manual override systems for power failure situations.
11. **Maintenance:** Requires minimal maintenance, typically limited to periodic lubrication of moving parts and cleaning with a mild detergent to remove dirt and debris.

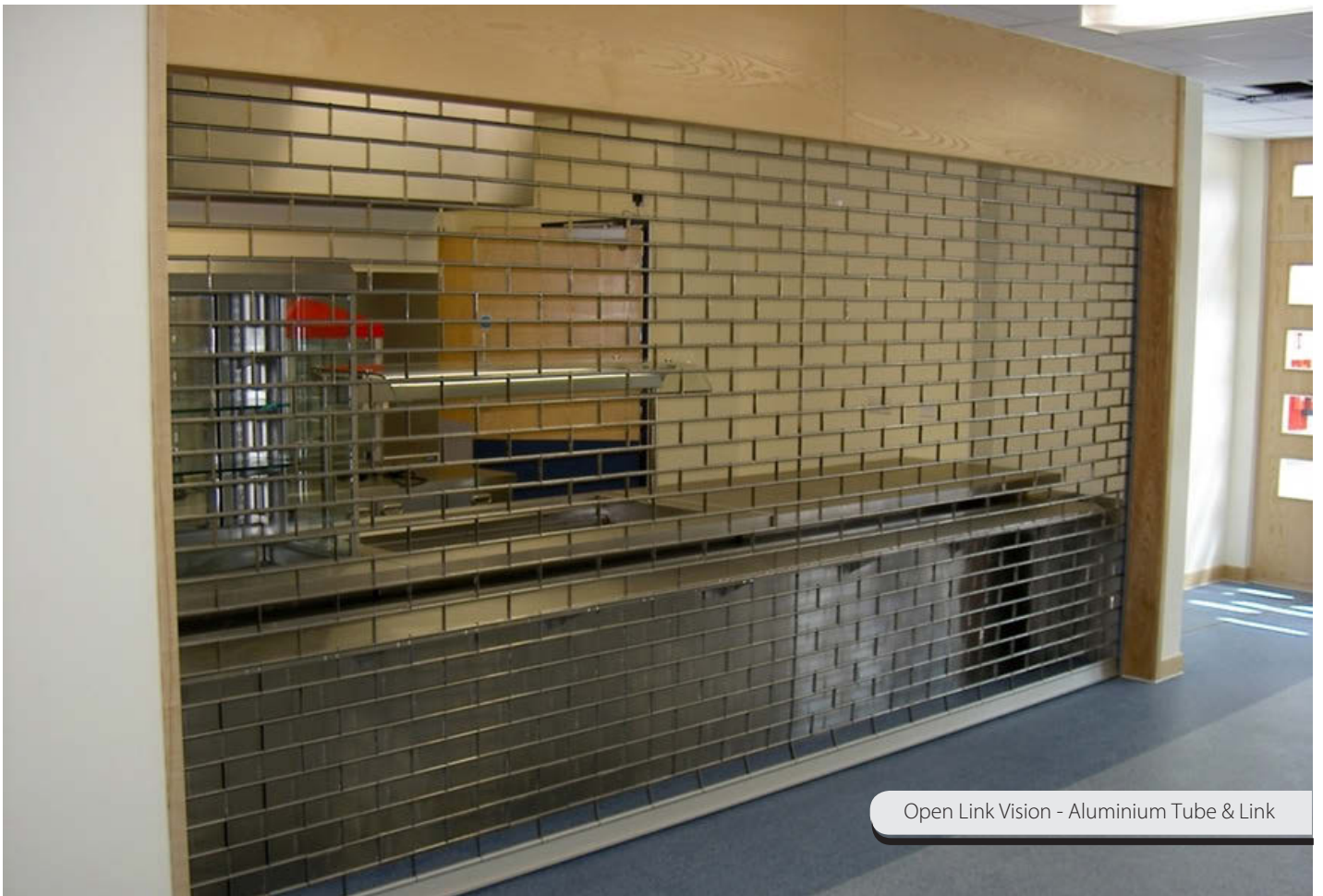


Plastic Link Vision

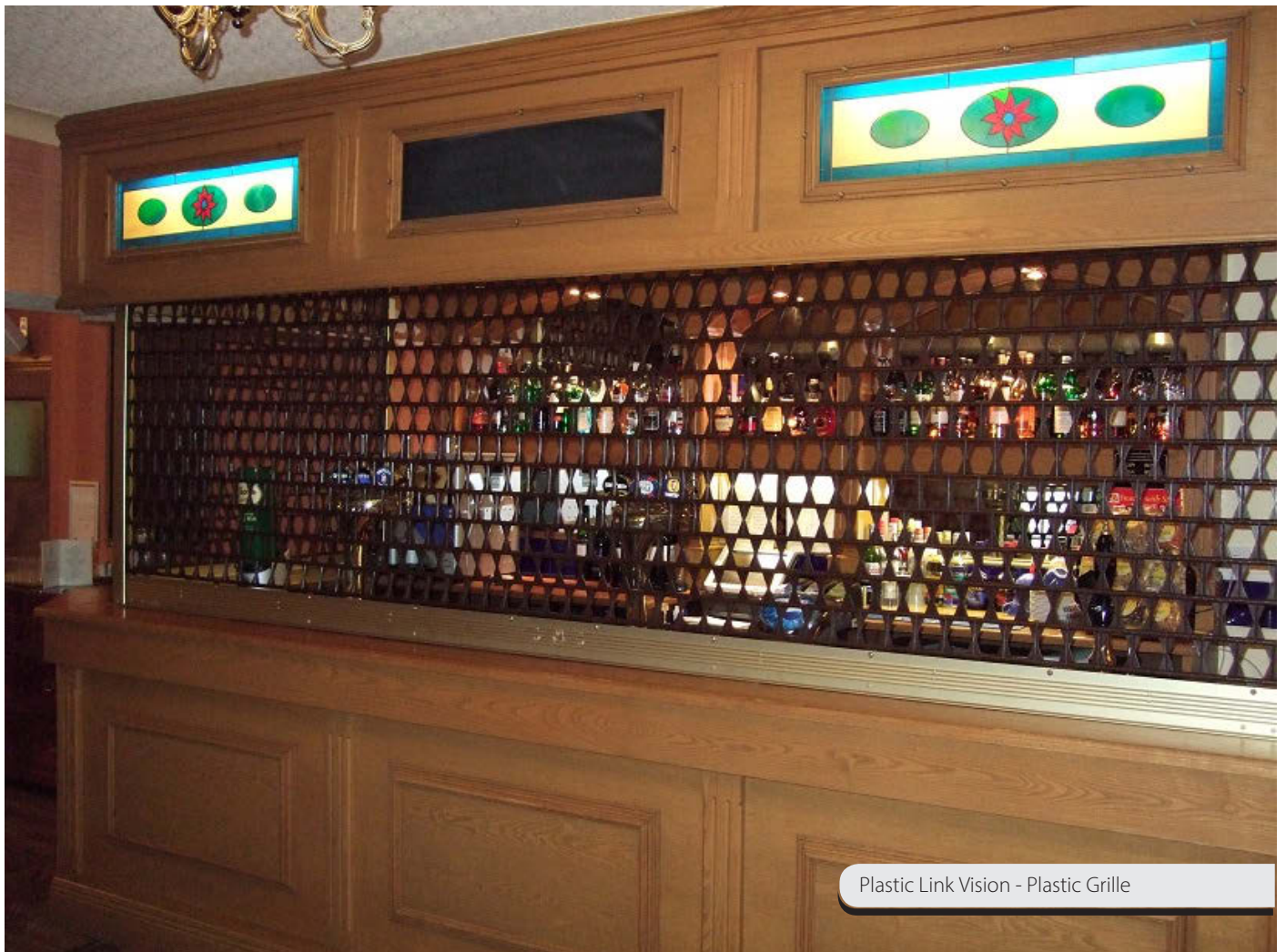
Plastic Grille

1. **Material:** Manufactured from high-quality plastic polymer material, polypropylene (PP), polyethylene (PE), These materials offer durability, corrosion resistance, and lightweight properties.
2. **Link Bar Design:** Consists of horizontal plastic links interconnected with flexible hinges or joints, forming a continuous curtain-like structure. The link bars are designed to provide flexibility and durability while maintaining security.
3. **Profile:** The plastic link bars typically have a rectangular or trapezoidal cross-section, providing strength and rigidity to the shutter assembly.
4. **Dimensions:** Available in various widths and heights to suit different applications. Standard widths may range from 500mm to 2000mm, and heights from 500mm to 3000mm, with custom sizes available upon request.
5. **Finish Options:** Can be supplied in a range of colours and finishes, for aesthetic appeal and customization
6. **Operation:** Operated manually using Spring & Lock, or motorized with options for remote control, key switch operation, or integration with building management systems.
7. **Security Features:** Designed to provide adequate security against unauthorized access, vandalism, and burglary attempts. The interlocking plastic links create a barrier, while locking mechanisms such as shoot bolts or ground locks enhance security further.
8. **Weather Resistance:** Plastic link bar shutters are resistant to corrosion, rust, and weathering, making them suitable for outdoor applications in various climates. UV-stabilized materials ensure long-term durability and colour retention, even in harsh sunlight.
9. **Safety Features:** Equipped with safety features such as a manual override systems for power failure situations.
10. **Maintenance:** Requires minimal maintenance, typically limited to periodic cleaning with a mild detergent and water to remove dirt and debris. Lubrication of moving parts may be necessary to ensure smooth operation.

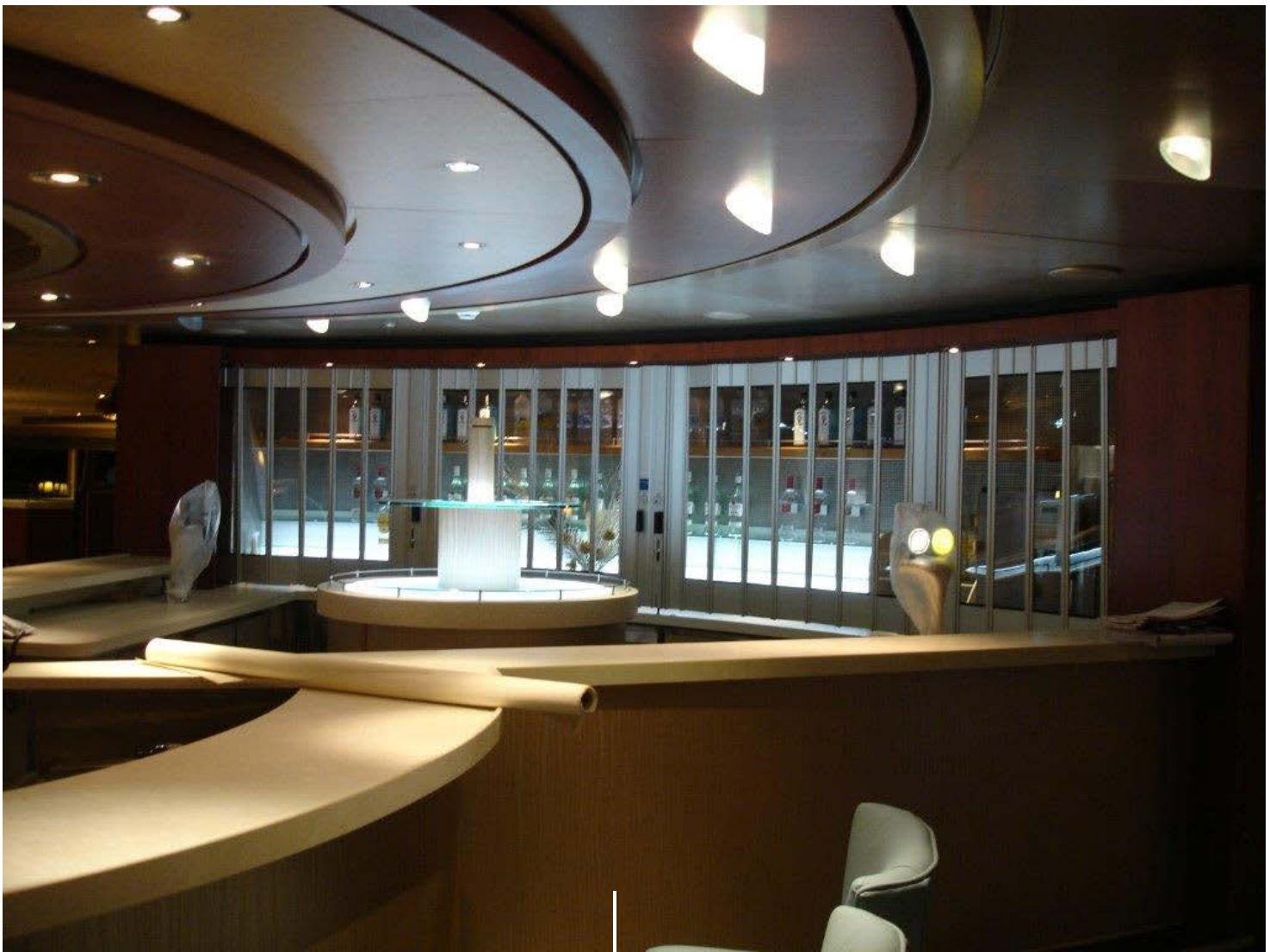
✓ UK designed, manufactured and assembled products



Open Link Vision - Aluminium Tube & Link



Plastic Link Vision - Plastic Grille



FlexiGlide Sliding Shutters

Sliding shutters are a popular alternative to traditional roller shutters. They are very versatile and you can use them in a wide variety of applications such as shopping centres, airports and restaurants.

FlexiGlide shutters are made from a set of strong aluminium panels that hinge together to form a curtain. This curtain hangs from an aluminium top-track and creates a secure barrier when the shutter is closed. FlexiGlide shutters slide and fold horizontally to the side, where they neatly fold away when not in use.

Technical Specification FlexiGlide sliding shutter

Horizontally-operated top-hung sliding folding shutter

General construction (varies slightly with each model):

Constructed of 152mm wide x 1.83mm thick full height aluminium panels. Panels framed by full height butt hinges on 178mm centres.

The overhead track is 34mm wide x 46mm high and takes 29mm diameter roller trolleys. The rollers bear on a 7mm thick aluminium surface within the track. Track curves, where indicated, have 254mm or 356mm radii. A custom radius track is available as an option.



Finish:

Standard factory finishes are 10 micron clear anodizing. Depending on model the following finishes are available: K1285 (white), K70632 (light bronze), K71232 (medium bronze) or K90421 (black) Duracron acrylic paint. The complete shutter can be powder coated to most RAL colours (not all models).

Maximum Sizes:

Maximum width: unlimited
maximum height: 4200mmH

Reasons to Choose SeceuroShield

✓ A name you can trust

When buying a SeceuroShield shutter you can be reassured by the values behind the name. Every SeceuroShield shutter is CE marked.

✓ Expert advice

With a local expert on hand you can be confident in choosing a product that suits your needs and provides a seamless finish to your property.

✓ Manufactured in the UK

Using the latest machinery and equipment, all SeceuroShield security products are proudly manufactured and assembled in the UK.

✓ A solution for everyone

With so much choice SeceuroShield security products can accommodate almost any requirement. Whether you need a built-in or built-on solution, solid or vision or need security on a small budget.

✓ Engineered to perfection

Through continuous development and specialist engineering, SeceuroShield security products offer unrivalled quality and the most advanced specifications.

The importance of conformity and CE marking

To comply with the Machinery Directive both the shutter and the motor and controller used in the installation must have a **Declaration of Incorporation** from the manufacturer.

On completion of the installation the installer must provide a **Declaration of Conformity** and apply a CE mark giving details of the installation to the shutter / motor and controller combination, which is now classed as a machine.

The installer must issue to the customer a Declaration of Conformity, maintenance and operation instructions on the completion of the installation.

The installer must hold copies of both the Declaration of Incorporation and the Declaration of Conformity on a technical file for inspection by the relevant authorities.

If any of the above requirements are not fulfilled the Installation is illegal.

Please ensure for your own safety and peace of mind that whoever installs your electric motor and controller is both willing and able to fulfil these requirements; if they are not – do not use them.

As a member of the DHF we CAN and WILL install your motor and controller safely and legally.

Peace-of-Mind Warranties

All SeceuroShield products are guaranteed against defect of material or workmanship by, subject to correct installation, maintenance and operation, for a period of one year from the date of purchase. The SeceuroDrive Motor carries a 5 year guarantee.

CONTACT US

Website: www.arrowsecurityshutters.co.uk

Email: sales@arrowsecurityshutters.co.uk

Telephone: 0800 633 5736

Registered office: Arrow Security Shutters Limited. Paragon Business Park, Chorley New Road, Horwich. Bolton. BL6 6HG. Registered in England: 4156177