



Protecting what's  
important to you



WINDOW BARS - GRILLES &  
RETRACTABLE GATES

**ARROW**   
SECURITY SHUTTERS  
Tel. 0800 633 5736



# Welcome to the SeceuroGuard range of physical security products

SeceuroGuard physical security products have been protecting properties since 1985.

Although often overlooked, securing your property provides peace of mind by protecting the things that matter most to you, whether that's your home and family or your business and consequently your livelihood. With so much choice, choosing a security product that most suits your needs can seem like a daunting task but SeceuroGuard industry leading products address all requirements and are manufactured, supplied and installed by industry experts who are there to offer advice and guidance beginning with your initial enquiry through to installation and after care.

Besides securing your property, many SeceuroShield products offer other benefits such as insulation and sound proofing, ventilation, or increased advertising space for your business by use of special graphics.

The emphasis behind our range of shutter and gate designs is on integration into your building and way of life; unobtrusive, attractive and easy to use. Proudly manufactured in the UK and installed to complement the look of the building, SeceuroShield products ensure they are effective and secure in daily use.

All products are supplied and installed through your local approved distributor who will be able to offer expert guidance and advice to ensure a tailor made solution.

## All SeceuroGuard products are:

- ✓ Made to measure for a tailor made security solution
- ✓ Manufactured in the UK
- ✓ CE Marked – Investing in a CE marked product means you are purchasing a product that is fully compliant with all European directives
- ✓ Designed to integrate security seamlessly into a building
- ✓ Approved LPCB and Secured By Design products available



# Versatile security

Security facts – did you know...

*"The goal of physical security is to convince potential attackers that the likely cost of attack exceeds the value of making the attack in the first place."*

Wikipedia

*"Crime costs businesses **£19 billion** annually."*

British Chamber of Commerce

*"Every **37 seconds** a house in Britain is burgled."*

*"Retail crime cost **£14 billion** in 2011."*

*"Prevention is always better than cure. **Always Deter, Delay, Detect, Deny.**"*



## Need some guidance?

Contact Us Today!

Email: [sales@arrowsecurityshutters.co.uk](mailto:sales@arrowsecurityshutters.co.uk) - Tel: 0800 633 5736

## Protecting What's Important to You



# Retail

Because security doesn't have to be ugly.

### What I need:

- I need to protect my premises outside of opening hours by deterring opportunist thieves and vandals
- My products still need to be visible to potential customers, even when my business is closed
- I need to protect my premises but the local planning laws have a very strict rules on shutters is there anything else
- I have a specific corporate colour and brand that I would really like to be seen 24 hours a day

### SeceuroShield has a solution

The 2009/2010 Retail Crime Survey carried out by the BRC reported a significant reduction in criminal damage compared to recent years with the reduction being largely attributed to retailers considerable investment to protect their businesses better. With the help of the SeceuroShield range these statistics can only become better – prevention is always better than cure.

High street or retail park, independent or multiple, crime prevention is a necessary consideration for all retailers. The SeceuroShield range of security takes the guesswork out of the security requirements for your premises. Let one of our approved distributors talk you through the options that meet your requirements so you can be safe in the knowledge that your premises are protected.

### Retailer Choice

- ✓ LPCB approved and SBD products available
- ✓ Available for both internal and external installation
- ✓ Vision available
- ✓ Colour coding and branding options
- ✓ Best advice from your local experts

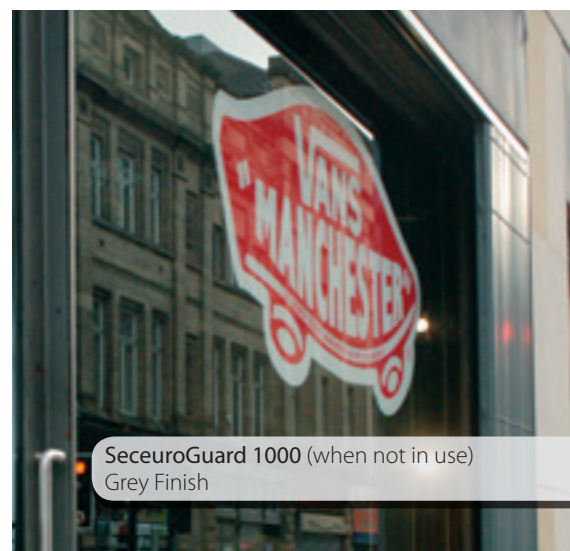




SeceuroGuard 1000  
Grey Finish



SeceuroGuard 1000  
Grey Finish



SeceuroGuard 1000 (when not in use)  
Grey Finish

## **SeceuroGuard | 1000** Retractable Security Gates



### The original retractable security gate.

Elegant good looks with a heart of steel – the SeceuroGuard retractable security gate system combines a classic appearance with a high level of protection, ideal for your home or workplace.

Designed to keep intruders out while letting maximum light in, they are perfect for vulnerable ground floor windows on doors, for domestic, retail or commercial premises.

When not in use these retractable gates are surprisingly unobtrusive. Fitted to the door or window surround, they can disappear neatly behind curtains and a pelmet can be used to conceal the top track.

SeceuroGuard retractable gates are exceptionally safe and easy to handle with a smooth, quiet operation. They hang from a top track with a guide track at the base which can be supplied as an optional extra to quickly fold away when not required.

- Exceptionally strong security barrier
- Galvanised for corrosion resistance and powder coated
- Fully retractable system
- Excellent through-vision when locked
- Multi-point locking from a single key
- Smooth running carrier system
- Custom built for any opening
- Quick and easy to use
- Can be fitted with a locking post at both ends to provide maximum flexibility of operation
- Where access is not required, a fixed sash option is available
- An unlimited width can be accommodated in sections

#### Ideal for:

- ✓ Retail premises
- ✓ Fitting in front or behind glass
- ✓ Offices
- ✓ Commercial premises
- ✓ Domestic properties
- ✓ Where a lower cost manual option is required



SeceuroGuard 1001  
White Finish



SeceuroGuard 1001  
White Finish



SeceuroGuard 1001  
White Finish

## **SeceuroGuard | 1001** Insurance Approved Retractable Security Gates

High security tested to Loss Prevention Standard 1175-1 (LPS 1175-1).

The SeceuroGuard retractable gate system combines a classic appearance with effective protection, ideal for the home or workplace. The high security 1001 is tested and approved to LPS 1175-1. The system can be easily fitted to the face or reveal of a window or door aperture and can be specified in a single or double-sash configuration. Where a clear walk through is required SeceuroGuard's bottom track can, as an optional extra, be made to fold up.

- **Versatile** – Fits internally in either the window reveal or around the opening in either single or double-sash configuration
- **Ease of use** – Smooth top running operation with an optional extra of a fold up bottom track to leave doorways unobstructed
- **Secure** – Multi-point locking operating from a single key
- **High quality finish** – Supplied in high quality white powder coated finish as standard

### SBD & LPCB

Learn more about Secured By Design and the Loss Prevention Certification Board on Pages 8-9

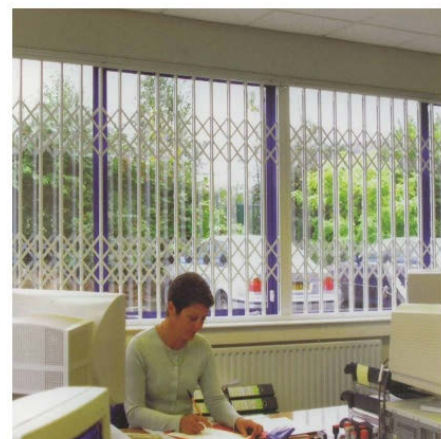
Optional RAL colours available on this and many of our security products:







*"We need Gates to protect our school."*



## Public Sector & Business

It's our business to protect yours.

### What I need:

- I don't want it to look unwelcoming when the security is in operation
- I have high value products at ground floor level that I need to protect
- I need easy operation of everything

### SeceuroGuard has a solution

With a wide variety of security solutions, we make it our business to protect your business. The SeceuroGuard range offers the widest variety of options available in one place, allowing us to fulfil your physical security needs without compromise. Whether you're in the public or business sector,

we know that no two requirements are quite the same. Designed and manufactured in the UK, each solution is made to measure so it's an exact fit for you. A professional survey by one of our approved local distributors will allow them to assess your specific needs and present the selection of options available in an easy to understand format. SeceuroGuard has the solution.

### Public Sector & Business Choice

- ✓ LPCB approved and SBD products available
- ✓ Available for both internal and external installation
- ✓ Supplied and Installed by your local expert
- ✓ Colour matching for seamless integration
- ✓ Built-in and built-on options available



## Protecting What's Important to You



*"We're not worried about leaving our house during the summer."*



## Residential

Total peace of mind for you and your family.

### What I need:

- Feel secure without compromising the look or style of my property
- Have peace of mind that my property is secure

According to British Crime Survey figures, there were an estimated 744,000 domestic burglaries carried out in England and Wales in 2008/2009.

### SeceuroShield has a solution

Our homes are not simply the place in which we live; they are our most precious assets and a haven from the world outside. Research has shown that houses without any form of security are three times as likely to be broken into than homes with security systems. Therefore, protecting our homes has never been more important.

### Residential Choice

- ✓ LPCB approved and SBD products available
- ✓ Built-in or Built-on products
- ✓ Seamless integration
- ✓ Choice of colours to suit your deco



# Hospitality

Convenient protection for you and your staff.

## What I need:

- To have a bar area as an operational room outside of licensed hours
- To have the option to cover a serving area
- To keep unauthorised personnel away from an area
- A choice between X Lattice or S Lattice

## SeceuroGuard has a solution

Hotels, restaurants, canteens and kiosks all have areas which need to be quickly and efficiently fenced off and bar and serving hatches which need to be securely locked up outside of opening hours. Keep your products visible as well as secure with our choice of vision shutters and retractable gates.

With an extensive choice of colours you can choose a product which blends into the corporate look of your business.

## Hospitality Choice

- ✓ LPCB approved and SBD products available
- ✓ Full integration into the premises with a choice of colour and vision

## Choice

- ✓ LPCB approved and SBD products available
- ✓ Local expert advice for the right product
- ✓ Full choice of colours and finishes

















As well as traditional applications, the SeceuroGuard range of products has proven to be extremely effective across many other projects. From animal enclosures to sheds, portable buildings, outhouses and cupboards, SeceuroGuard security offers a versatile solution for almost any vulnerable opening or as an effective method of access control.

# Other applications

Versatile security with SeceuroGuard.



# Product Matrix

 <b>SeceuroShield</b> Physical Security	Page	Investment & Security	Domestic	Retail	Commercial	Bar / Server / Kiosk / Cabinet	Maximum & Minimum Widths <sup>1</sup>
<b>SeceuroShield 3801</b> Insurance Approved Security Shutters	11		•	•	•	•	Min: 900 mm Max: 3000 x 4000 mm
<b>SeceuroShield 7501</b> Insurance Approved Security Shutters	11			•	•		Min: 1000 mm Max: 6000 x 3400 mm
<b>SeceuroShield 38</b> Built-On Security Shutters Solid Slats	10		•	•	•	•	Min: 500 mm Max: 4000 x 5000 mm
<b>SeceuroShield 75</b> Built-On Security Shutters Solid Slats	12			•	•	•	Min: 1000 mm <sup>2</sup> Max: 6000 x 3400 mm
<b>SeceuroShield 60</b> Built-On Security Shutters Solid Slats	12			•	•	•	Min: 900 mm Max: 6000 x 5000 mm
<b>SeceuroShield 150</b> Built-On Security Shutters Solid Slats	13		•			•	Min: 500 mm Max: 3400 x 4000 mm
<b>SeceuroShield 77</b> Built-On Security Shutters Solid Slats	13		•	•	•	•	Min: 900 mm Max: 5400 x 4000 mm
<b>SeceuroVision 900</b> See-Through Shutters 55-69% Vision	14			•	•	•	Min: 900 mm Max: 5000 x 4000 mm
<b>SeceuroVision 800</b> See-Through Shutters Punched & Glazed 62% Vision	14			•	•	•	Min: 900 mm Max: 6000 x 5000 mm
<b>SeceuroVision 75</b> See-Through Shutters Perforated 25% Vision	15			•	•	•	Min: 1000 mm <sup>2</sup> Max: 6000 x 3400 mm
<b>SeceuroVision 38</b> See-Through Shutters Punched & Glazed 45% Vision	15		•	•	•	•	Min: 500 mm Max: 3000 x 5000 mm
<b>SeceuroVision 38</b> See-Through Shutters Perforated 17% Vision	15		•	•	•	•	Min: 500 mm Max: 3000 x 5000 mm
<b>SeceuroGuard 1000</b> Retractable Security Gates	16		•	•	•	•	Min: 500 x 500 mm Max: 6000 x 3500 mm
<b>SeceuroGuard 1001</b> Insurance Approved Retractable Security Gates	17		•	•	•	•	Min: 500 x 1000 mm Max: 6000 x 3000 mm
<b>SeceuroBar</b> Removable Window Bars	18		•	•	•	•	Min: 250 x 200 mm Max: 3000 x 2100 mm



1 Sizes quoted may not be available with some operation modes and may alter depending on product application, wind loading or whether installed as a secondary or sole closure. Limitations apply to maximum overall sizes.

2 Please note the maximum sizes quoted for SeceuroShield 75 and SeceuroVision 75 are applicable to the continental style shutter with aluminium head box and guide rails. These products are also available with traditional galvanised steel channels and head box. The maximum sizes for the traditional style are: maximum width 6400 mm, maximum height 4700 mm and maximum area 20 sqm.

Insulated	Secured By Design	LPCB Insurance Approved	Electric (E) or Manual (M)	Standard Finishes	Any RAL/BS Colour as an Extra
	✓	✓	E	3	✓
	✓	✓	E & M	1	✓
			E & M	3	✓
			E & M	1	✓
			E & M	3	✓
✓			E & M	4	
✓			E & M	12	
			E & M	1	✓
			E & M	3	✓
			E & M	1	✓
			E & M	3	✓
			E & M	4	✓
			M	27	✓
	✓	✓	M	27	✓
			M	1	✓

## Secured by Design



Secured by Design is the official UK Police flagship initiative supporting the principles of 'designing out crime' by use of effective crime prevention and security standards for a wide range of products and applications.

Only products which have been tested and meet the required technical standard can be awarded the Police Preferred Specification.

## Insurance approved security



The rigorous LPS 1175 burglary resistance standard is operated by the Loss Prevention Certification Board (LPCB). LPCB are the UK's leading independent certification body and the LPS 1175 standard is recognised and endorsed by 16 organisations including the Association of British Insurers and the Association of Chief Police Officers.

For more information on the scheme refer to:

[www.brecertification.co.uk](http://www.brecertification.co.uk)

## CE marking

Learn more about the importance of conformity and CE marking on **Page 15**.



## Removable Window Bars.

The award-winning SeceuroBar system features anti-cut steel bars which are securely locked into position to protect vulnerable window openings, but can be released from the inside to allow total vision or maintenance of windows.

Suitable for installation in a horizontal or vertical format, SeceuroBar is finished to a high standard and delivers security which is quick and easy to install, yet highly effective in a range of locations.

A higher security fixed bar system is also available for locations where removal is not a requirement.

1. **Material:** Constructed from high-strength steel with an inner and outer tube for durability and security.
2. **Design:** Removable window bars typically consist of individual bars that are attached to the cill and header with the use of retainer tracks. They can be easily installed or removed with a key as needed, providing flexibility and convenience.
3. **Bar Diameter/Thickness:** The diameter or thickness of the bars for a higher level of security outer bar 19mm inner bar 15mm
4. **Spacing Between Bars:** The spacing between bars should be designed to prevent unauthorized access while allowing sufficient visibility and ventilation. Spacing is 100mm.
5. **Finish Options:** Removable window bars can be supplied in a range of finishes, including powder-coated, or painted finishes, providing both aesthetic appeal and protection against corrosion.
6. **Dimensions:** Available in various widths and heights to fit different window sizes and configurations. Custom sizes can be manufactured to suit specific requirements.
7. **Easy install:** Removable window bars are typically fixed to the cill and top header. The bars are designed to fit within the recess with easy installation and can be removed without causing damage to the window frame.
8. **Security Features:** Designed to provide effective security against forced entry and burglary attempts. The bars are made from sturdy materials and securely attached within the top and bottom retainers to prevent removal by unauthorized individuals.
9. **Maintenance:** Requires minimal maintenance, typically limited to periodic cleaning with a mild detergent and water to remove dirt and debris. Lubrication of moving parts may be necessary to ensure smooth operation of the attachment mechanism.

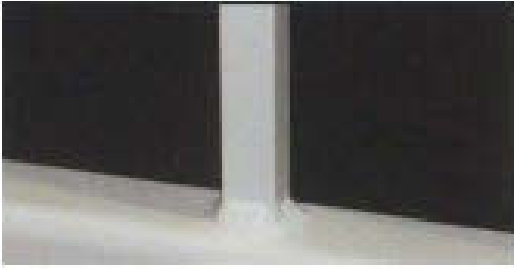






## FIXED WINDOW BARS |

Square or round bar



**Square Bars** - 20 mm. Box section frame 40 x 40mm



**Round Bars** - 16 mm. Box section frame 40 x 40mm



- ✓ The overall width is not greater than 6000 mm
- ✓ You need to blend the colour into your surroundings
- ✓ You prefer the traditional steel shutter over aluminium
- ✓ You have an external application

1. **Material:** Constructed from high-strength steel for durability and security.
2. **Design:** Fixed window bars are permanently attached to the window frame or surrounding structure to provide a strong physical barrier against forced entry.
3. **Bar Diameter/Thickness:** The diameter or thickness of the bars (Square bar 20mm, Round Bar 16mm) Frame size 40mm
4. **Spacing Between Bars:** The spacing between bars should be designed to prevent unauthorized access while allowing sufficient visibility and ventilation. Common spacing range is set at 125mm, although this can vary depending on specific security requirements.
5. **Finish Options:** Fixed window bars can be supplied in a range of finishes, including powder-coated, galvanized, or painted finishes, providing both aesthetic appeal and protection against corrosion.
6. **Dimensions:** Available in various widths and heights to fit different window sizes and configurations. Custom sizes can be manufactured to suit specific requirements.
7. **Attachment Method:** Fixed window bars are securely attached to the window frame or surrounding structure using bolts, screws, or welding, depending on the installation requirements and structural considerations.
8. **Security Features:** Designed to provide effective security against forced entry and burglary attempts. The bars are made from sturdy materials and securely attached to prevent removal by unauthorized individuals.
9. **Weather Resistance:** Steel construction offers excellent resistance to corrosion, rust, and weathering, making fixed window bars suitable for outdoor applications in various climates.
10. **Maintenance:** Requires minimal maintenance, typically limited to periodic cleaning with a mild detergent and water to remove dirt and debris.



Offering security and insulation.

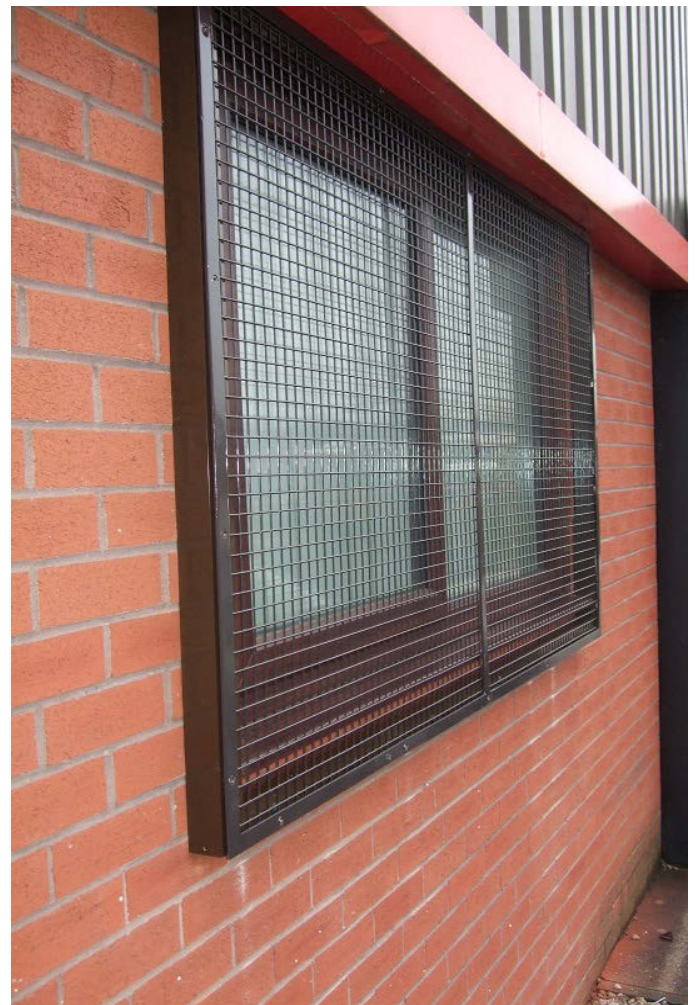
- Material: Constructed from steel
- Colour choice: Available in RAL or BS
- Dimensions: Available in various widths and heights to fit different window sizes and configurations. Custom sizes can be manufactured to suit specific requirements

## Finish Options

Window grilles can be supplied in a range of finishes, including powder-coated, galvanised, or painted finishes, providing both aesthetic appeal and protection against corrosion

### Choose me if:

- ✓ You are looking for a strong physical barrier against forced entry
  - ✓ You are after deterring burglars and intruders
  - ✓ If you are after a See-through product whilst maintaining security
  - ✓ You require long-lasting protection and resistance to weathering
- 
- Requires minimal maintenance
  - Suitable for indoor and outdoor use
  - Hinged options available





# Reasons to Choose SeceuroShield

## ✓ A name you can trust

When buying a SeceuroShield shutter or gate you can be reassured by the values behind the name. Every SeceuroShield is CE marked.

## ✓ Expert advice

With a local expert on hand you can be confident in choosing a product that suits your needs and provides a seamless finish to your property.

## ✓ Manufactured in the UK

Using the latest machinery and equipment, all SeceuroShield security products are proudly manufactured and assembled in the UK.

## ✓ A solution for everyone

With so much choice SeceuroShield security products can accommodate almost any requirement. Whether you need a built-in or built-on solution, solid or vision or need security on a small budget.

## ✓ Engineered to perfection

Through continuous development and specialist engineering, SeceuroShield security products offer unrivalled quality and the most advanced specifications.

## The importance of conformity and CE marking

To comply with the Machinery Directive both the shutter and the motor and controller used in the installation must have a **Declaration of Incorporation** from the manufacturer.

On completion of the installation the installer must provide a **Declaration of Conformity** and apply a CE mark giving details of the installation to the shutter / motor and controller combination, which is now classed as a machine.

The installer must issue to the customer a Declaration of Conformity, maintenance and operation instructions on the completion of the installation.

The installer must hold copies of both the Declaration of Incorporation and the Declaration of Conformity on a technical file for inspection by the relevant authorities.

If any of the above requirements are not fulfilled the Installation is illegal.

Please ensure for your own safety and peace of mind that whoever installs your electric motor and controller is both willing and able to fulfil these requirements; if they are not – do not use them.

As a member of the DHF we CAN and WILL install your motor and controller safely and legally.

# Peace-of-Mind Warranties

All SeceuroShield products are guaranteed against defect of material or workmanship by, subject to correct installation, maintenance and operation, for a period of 2 years from the date of purchase. The SeceuroDrive Motor carries a 5 year guarantee.

## CONTACT US

Website: [www.arrowsecurityshutters.co.uk](http://www.arrowsecurityshutters.co.uk)

Email: [sales@arrowsecurityshutters.co.uk](mailto:sales@arrowsecurityshutters.co.uk)

Tel: 0800 633 5736



Registered office: Arrow Security Shutters Limited. Paragon Business Park, Chorley New Road, Horwich. Bolton. BL6 6HG. Registered in England: 4156177